



Flexible Couplings Service Center





**Need Coupling Solutions?
Look No further
We are HERE, for YOU
Anywhere, Anytime...**

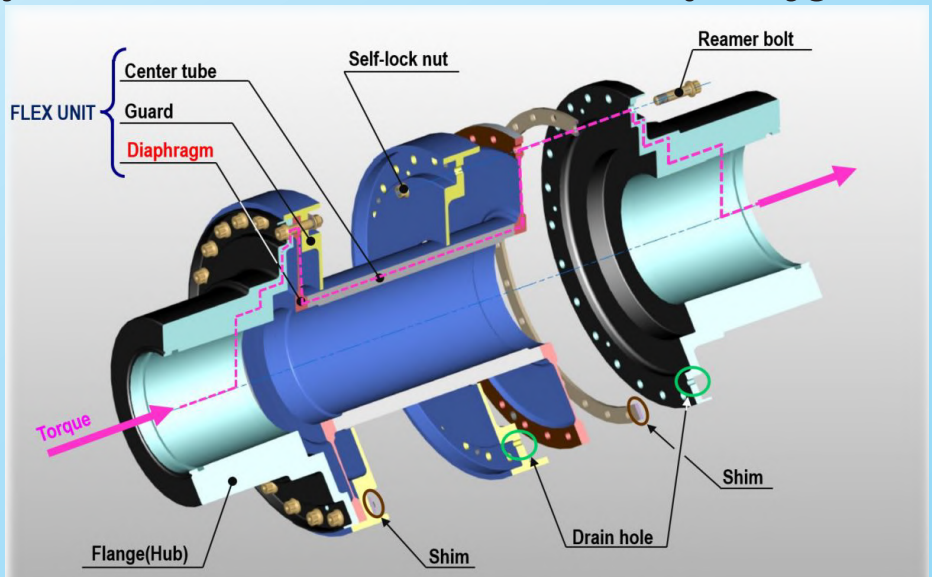
- Precise Inspections
- Repair & Refurbishment
- Non-Destructive Testing (NDT)
- Dynamic Balancing-Vertical/Horizontal Machines
- New Design & Re-Design for Revamps
- Supply of Standard Parts from our Service Stock
- Stress Calculation for New Operating Conditions



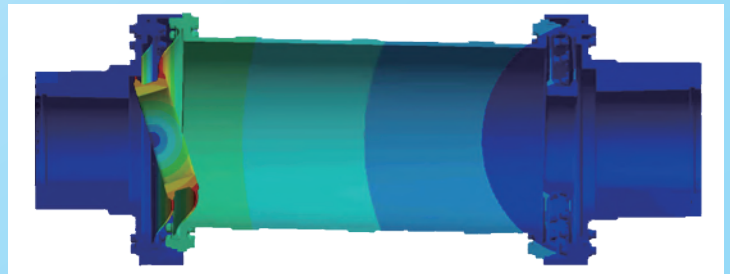
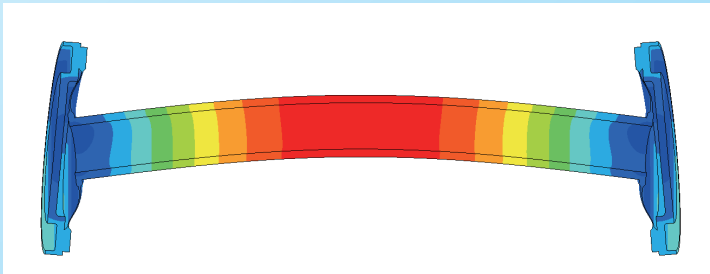
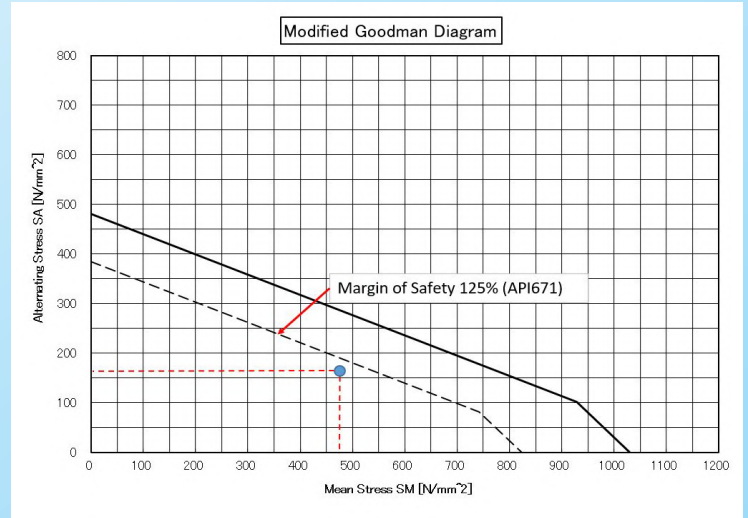
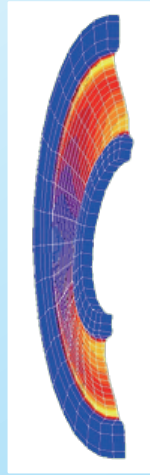
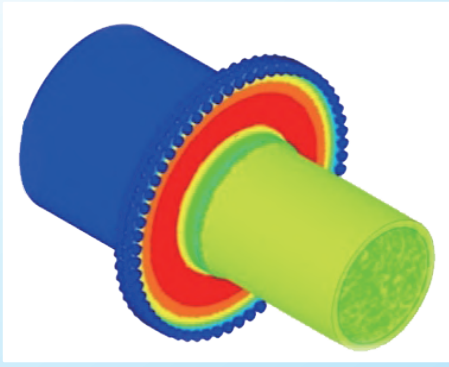
Leading the State-of-the-Art Technology

- Higher transmitting torque
- Higher operating speed
- Lightest weight and simple design
- Reduced moment design
- Fail-safe guard
- Best balance repeatability
- One-piece profiled diaphragm
- Full compliance with API671 / ISO10441

Simple Configuration



Proven Analyses by Finite Element Method



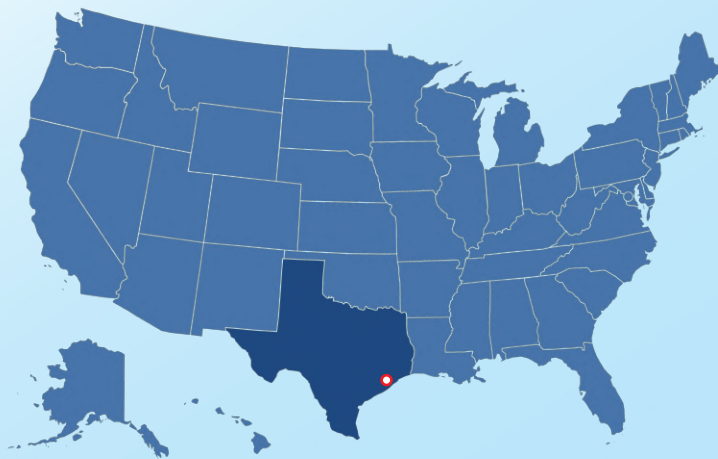
Standard Coupling Dimensions & Characteristics

TYPE SIZE	Alloy Steel Model 67 / 74				Stainless Steel Model 99 / 100				Coupling O.D. (mm)	MAX. Shaft Dia. (mm)
	MAX Continuous Torque (Nm)	Misalignment Axial Deflection (+/- mm)	Angular Deflection (+/- rad)	Limit Speed (rpm)	MAX Continuous Torque (Nm)	Misalignment Axial Deflection (+/- mm)	Angular Deflection (+/- rad)	Limit Speed (rpm)		
305	1,500	1.60	4.36x10 ⁻³	34,000	3,280	1.24	5.81x10 ⁻³	35,000	155.2	70
405	2,000	1.24	3.49x10 ⁻³	39,000	4,290	1.01	4.36x10 ⁻³	40,000		
505	2,500	1.01	2.90x10 ⁻³	44,000	5,420	0.81	3.49x10 ⁻³	45,000		
605	3,000	0.85	2.49x10 ⁻³	48,000	6,550	0.66	2.90x10 ⁻³	50,000		
306	2,960	1.91	4.36x10 ⁻³	29,000	6,430	1.52	5.81x10 ⁻³	28,000		
406	3,950	1.50	3.49x10 ⁻³	33,000	8,580	1.19	4.36x10 ⁻³	33,000		
506	4,930	1.23	2.90x10 ⁻³	37,000	10,700	1.01	3.49x10 ⁻³	38,000		
606	5,920	1.05	2.49x10 ⁻³	41,000	12,800	0.83	2.90x10 ⁻³	43,000		
308	6,600	2.54	4.36x10 ⁻³	24,000	14,300	1.91	5.81x10 ⁻³	23,000	234.6	120
408	8,800	1.99	3.49x10 ⁻³	28,000	19,100	1.60	4.36x10 ⁻³	28,000		
508	11,000	1.63	2.90x10 ⁻³	31,000	23,900	1.29	3.49x10 ⁻³	33,000		
608	13,200	1.38	2.49x10 ⁻³	34,000	27,700	1.19	2.90x10 ⁻³	35,000		
310	12,400	2.95	4.36x10 ⁻³	21,000	26,900	2.18	5.81x10 ⁻³	20,000		
410	16,500	2.35	3.49x10 ⁻³	24,000	35,800	1.82	4.36x10 ⁻³	25,000		
510	20,600	1.95	2.90x10 ⁻³	27,000	44,800	1.47	3.49x10 ⁻³	28,000		
610	24,700	1.66	2.49x10 ⁻³	30,000	53,900	1.27	2.90x10 ⁻³	30,000		
312	22,500	3.84	4.36x10 ⁻³	18,000	49,100	2.66	5.81x10 ⁻³	19,000	333.0	185
412	30,100	3.01	3.49x10 ⁻³	21,000	65,500	2.20	4.36x10 ⁻³	22,000		
512	37,600	2.47	2.90x10 ⁻³	23,000	81,900	1.85	3.49x10 ⁻³	25,000		
612	45,100	2.09	2.49x10 ⁻³	26,000	98,100	1.57	2.90x10 ⁻³	27,000		
314	33,600	4.23	4.36x10 ⁻³	16,000	73,000	2.92	5.81x10 ⁻³	17,000		
414	44,800	3.35	3.49x10 ⁻³	19,000	97,300	2.46	4.36x10 ⁻³	20,000		
514	55,900	2.76	2.90x10 ⁻³	21,000	122,000	2.05	3.49x10 ⁻³	23,000		
614	67,100	2.35	2.49x10 ⁻³	24,000	146,000	1.72	2.90x10 ⁻³	25,000		
316	53,700	4.69	4.36x10 ⁻³	15,000	116,000	3.20	5.81x10 ⁻³	15,000	433.1	245
416	71,600	3.77	3.49x10 ⁻³	17,000	155,000	2.71	4.36x10 ⁻³	17,000		
516	89,500	3.14	2.90x10 ⁻³	19,000	194,000	2.28	3.49x10 ⁻³	20,000		
616	107,000	2.68	2.49x10 ⁻³	21,000	232,000	1.93	2.90x10 ⁻³	22,000		
318	72,100	4.67	4.36x10 ⁻³	14,000	157,000	3.75	5.81x10 ⁻³	14,000		
418	96,200	4.04	3.49x10 ⁻³	16,000	210,000	3.17	4.36x10 ⁻³	16,000		
518	120,000	3.39	2.90x10 ⁻³	18,000	262,000	2.69	3.49x10 ⁻³	19,000		
618	144,000	2.90	2.49x10 ⁻³	20,000	314,000	2.31	2.90x10 ⁻³	21,000		
322	138,000	7.65	4.36x10 ⁻³	12,000	299,000	4.36	5.81x10 ⁻³	12,000	568.3	330
422	184,000	5.99	3.49x10 ⁻³	14,000	399,000	3.75	4.36x10 ⁻³	14,000		
522	230,000	4.91	2.90x10 ⁻³	15,000	499,000	3.25	3.49x10 ⁻³	16,000		
622	276,000	4.16	2.49x10 ⁻³	17,000	599,000	2.74	2.90x10 ⁻³	19,000		

For further information of these data, go to https://www.ekkeagle.com/en/wp-content/uploads/2014/11/N003-11186DC_EN_web.pdf
For the figures larger than these listed above, please contact us. We can meet your specific needs/requirements.



Newly opened for the burgeoning Oil and Gas Industries.



EKK Eagle America Inc., General Machinery Div.

1718 N. Fry Rd., Suite 230, Houston, TX 77084, USA

main: +1 (832) 321-5235

For further information on this product, please visit

https://www.ekkeagle.com/en/product/oil_gas/diaphragm-coupling or read QR code.

