



Flexible Couplings Service Center

Aerospace **Houston Branch**
Research & Trading, Inc.





***Need Coupling Solutions?
Look No further
We are HERE, for YOU
Anywhere, Anytime...***

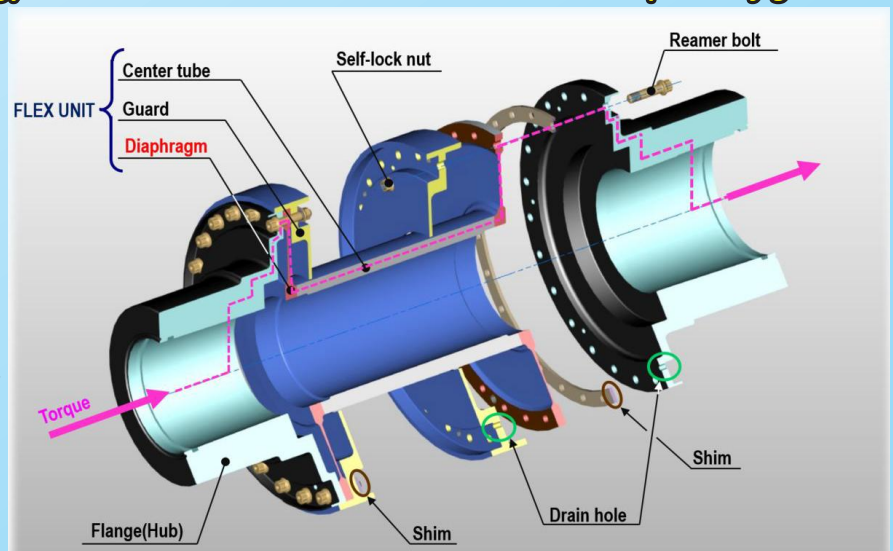
- Precise Inspections
- Repair & Refurbishment
- Non-Destructive Testing (NDT)
- Dynamic Balancing-Vertical/Horizontal Machines
- New Design & Re-Design for Revamps
- Supply of Standard Parts from our Service Stock
- Stress Calculation for New Operating Conditions



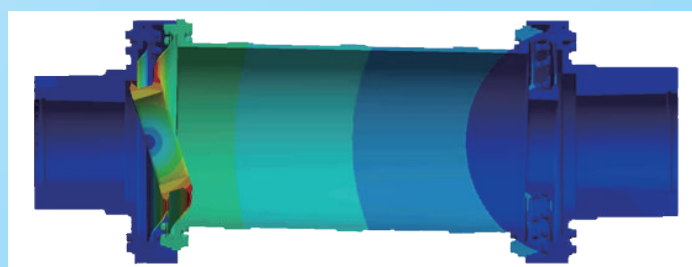
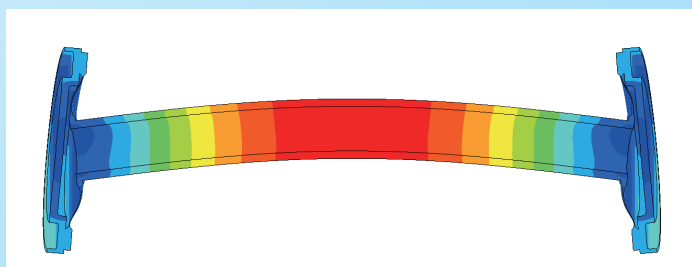
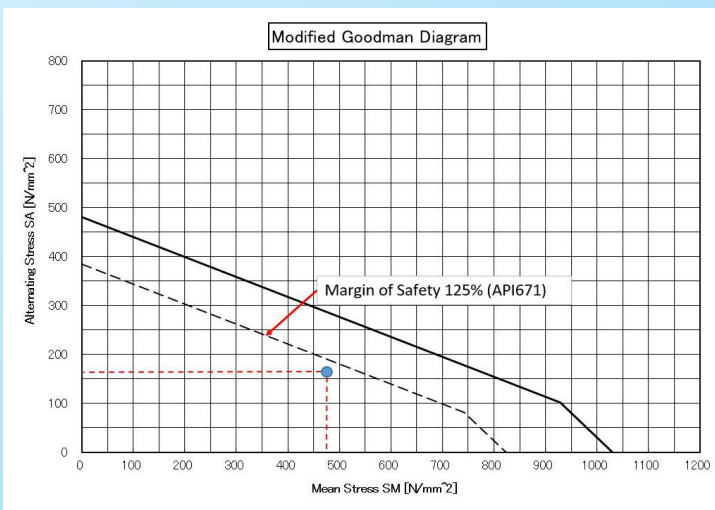
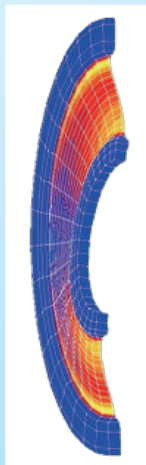
Leading the State-of-the-Art Technology

- Higher transmitting torque
- Higher operating speed
- Lightest weight and simple design
- Reduced moment design
- Fail-safe guard
- Best balance repeatability
- One-piece profiled diaphragm
- Full compliance with API671 / ISO10441

Simple Configuration



Proven Analyses by Finite Element Method



Standard Coupling Dimensions & Characteristics

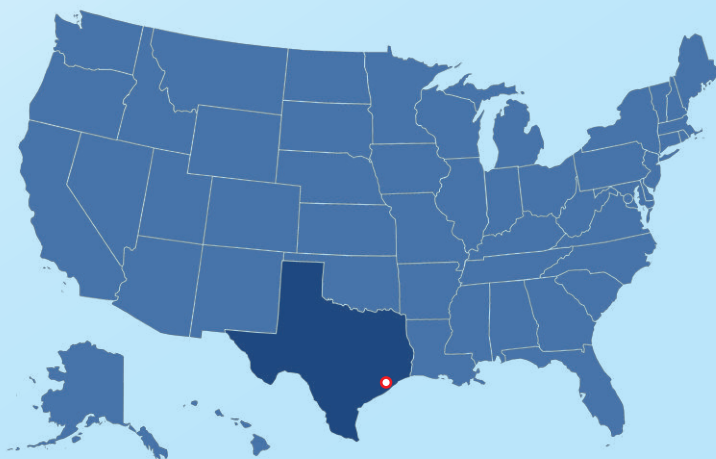
TYPE SIZE	Alloy Steel Model 67 / 74			Limit Speed (rpm)	Stainless Steel Model 99 / 100			Coupling O.D. (mm)	MAX. Shaft Dia. (mm)
	MAX Continuous Torque (Nm)	Misalignment Axial Deflection (+/- mm)	Angular Deflection (+/- rad)		MAX Continuous Torque (Nm)	Misalignment Axial Deflection (+/- mm)	Angular Deflection (+/- rad)		
305	1,500	1.60	4.36x10 ⁻³	34,000	3,280	1.24	5.81x10 ⁻³	155.2	70
405	2,000	1.24	3.49x10 ⁻³	39,000	4,290	1.01	4.36x10 ⁻³		
505	2,500	1.01	2.90x10 ⁻³	44,000	5,420	0.81	3.49x10 ⁻³		
605	3,000	0.85	2.49x10 ⁻³	48,000	6,550	0.66	2.90x10 ⁻³		
306	2,960	1.91	4.36x10 ⁻³	29,000	6,430	1.52	5.81x10 ⁻³	183.2	85
406	3,950	1.50	3.49x10 ⁻³	33,000	8,580	1.19	4.36x10 ⁻³		
506	4,930	1.23	2.90x10 ⁻³	37,000	10,700	1.01	3.49x10 ⁻³		
606	5,920	1.05	2.49x10 ⁻³	41,000	12,800	0.83	2.90x10 ⁻³		
308	6,600	2.54	4.36x10 ⁻³	24,000	14,300	1.91	5.81x10 ⁻³	234.6	120
408	8,800	1.99	3.49x10 ⁻³	28,000	19,100	1.60	4.36x10 ⁻³		
508	11,000	1.63	2.90x10 ⁻³	31,000	23,900	1.29	3.49x10 ⁻³		
608	13,200	1.38	2.49x10 ⁻³	34,000	27,700	1.19	2.90x10 ⁻³		
310	12,400	2.95	4.36x10 ⁻³	21,000	26,900	2.18	5.81x10 ⁻³	279.0	150
410	16,500	2.35	3.49x10 ⁻³	24,000	35,800	1.82	4.36x10 ⁻³		
510	20,600	1.95	2.90x10 ⁻³	27,000	44,800	1.47	3.49x10 ⁻³		
610	24,700	1.66	2.49x10 ⁻³	30,000	53,900	1.27	2.90x10 ⁻³		
312	22,500	3.84	4.36x10 ⁻³	18,000	49,100	2.66	5.81x10 ⁻³	333.0	185
412	30,100	3.01	3.49x10 ⁻³	21,000	65,500	2.20	4.36x10 ⁻³		
512	37,600	2.47	2.90x10 ⁻³	23,000	81,900	1.85	3.49x10 ⁻³		
612	45,100	2.09	2.49x10 ⁻³	26,000	98,100	1.57	2.90x10 ⁻³		
314	33,600	4.23	4.36x10 ⁻³	16,000	73,000	2.92	5.81x10 ⁻³	377.4	210
414	44,800	3.35	3.49x10 ⁻³	19,000	97,300	2.46	4.36x10 ⁻³		
514	55,900	2.76	2.90x10 ⁻³	21,000	122,000	2.05	3.49x10 ⁻³		
614	67,100	2.35	2.49x10 ⁻³	24,000	146,000	1.72	2.90x10 ⁻³		
316	53,700	4.69	4.36x10 ⁻³	15,000	116,000	3.20	5.81x10 ⁻³	433.1	245
416	71,600	3.77	3.49x10 ⁻³	17,000	155,000	2.71	4.36x10 ⁻³		
516	89,500	3.14	2.90x10 ⁻³	19,000	194,000	2.28	3.49x10 ⁻³		
616	107,000	2.68	2.49x10 ⁻³	21,000	232,000	1.93	2.90x10 ⁻³		
318	72,100	4.67	4.36x10 ⁻³	14,000	157,000	3.75	5.81x10 ⁻³	479.4	265
418	96,200	4.04	3.49x10 ⁻³	16,000	210,000	3.17	4.36x10 ⁻³		
518	120,000	3.39	2.90x10 ⁻³	18,000	262,000	2.69	3.49x10 ⁻³		
618	144,000	2.90	2.49x10 ⁻³	20,000	314,000	2.31	2.90x10 ⁻³		
322	138,000	7.65	4.36x10 ⁻³	12,000	299,000	4.36	5.81x10 ⁻³	568.3	330
422	184,000	5.99	3.49x10 ⁻³	14,000	399,000	3.75	4.36x10 ⁻³		
522	230,000	4.91	2.90x10 ⁻³	15,000	499,000	3.25	3.49x10 ⁻³		
622	276,000	4.16	2.49x10 ⁻³	17,000	599,000	2.74	2.90x10 ⁻³		

For further information of these data, go to https://www.ekkeagle.com/en/wp-content/uploads/2014/11/N003-11186DC_EN_web.pdf

For the figures larger than these listed above, please contact us. We can meet your specific needs/requirements.



Newly opened for the burgeoning Oil and Gas Industries.



EKK Flexible Couplings Service Center

Aerospace Research and Trading, Inc. Houston Branch

1718 N. Fry Rd., Suite 230, Houston, TX 77084, USA

main: +1 (832) 321-5235

For further information of the product, go to

https://www.ekkeagle.com/en/product/oil_gas/diaphragm-coupling or read QR code.

